



Riding the Trail

Call 027 241 0858

www.aroundthemountaincycling.nz

info@atmtrail.co.nz

Ranges from day rides up to 5 day rides

Graded 1 (Easy) to 3 (Intermediate)

Can be ridden in either direction

Open year round

Guided tours and bike hire available

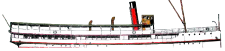
TRANSPORT DETAILS

SHERPA SHUTTLE TRANSPORT



- Between Queenstown & Kingston
- Between Lumsden/Mossburn & Mavora Lakes

BOAT TRANSPORT



Real Journeys TSS Earnslaw
Walter Peak Homestead to Queenstown

Southern Discoveries Spirit of Queenstown
Mount Nicholas Station to Queenstown

MAP KEY

- Around The Mountain Cycle Trail
- 16km Distance between two points
- 3hrs 50mins Time between two points (at an average riding speed of 10km/hr)
- Southern Discoveries Spirit of Queenstown
- Real Journeys TSS Earnslaw

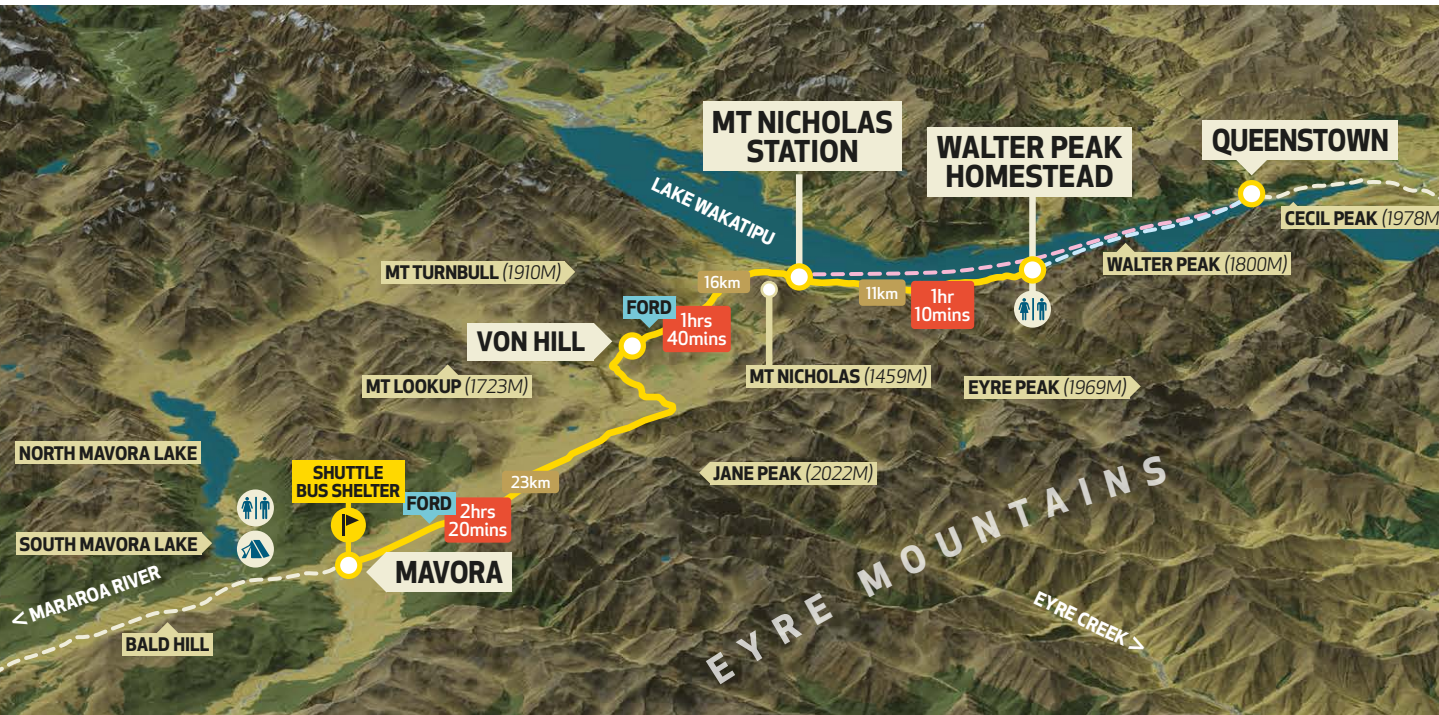
- Accommodation
- Pub/Beverages
- Toilets
- Petrol
- Food
- Camping
- Coffee
- Bakery



Walter Peak to Centre Hill

via Mavora Lakes

Ride through stunning backcountry and the foothills of the Eyre Mountains



Walter Peak to Mavora Lakes - 50km



At Queenstown you board the iconic 102 year old vintage steamship the TSS Earnslaw to cruise across Lake Wakatipu to Walter Peak.

Starting your ride at Walter Peak Station and passing the Mt Nicholas Station, the trail passes the show stopping Von Valley/River. Mt Nicholas Station was the first station to supply "Ice Breaker" merino wool.

Crossing the bridge at Black Spur Creek and ford at the Gorge Burn, the trail follows the beautiful, natural tussock valley along Mt Nichols Road.

Mavora Lakes to Centre Hill - 35km

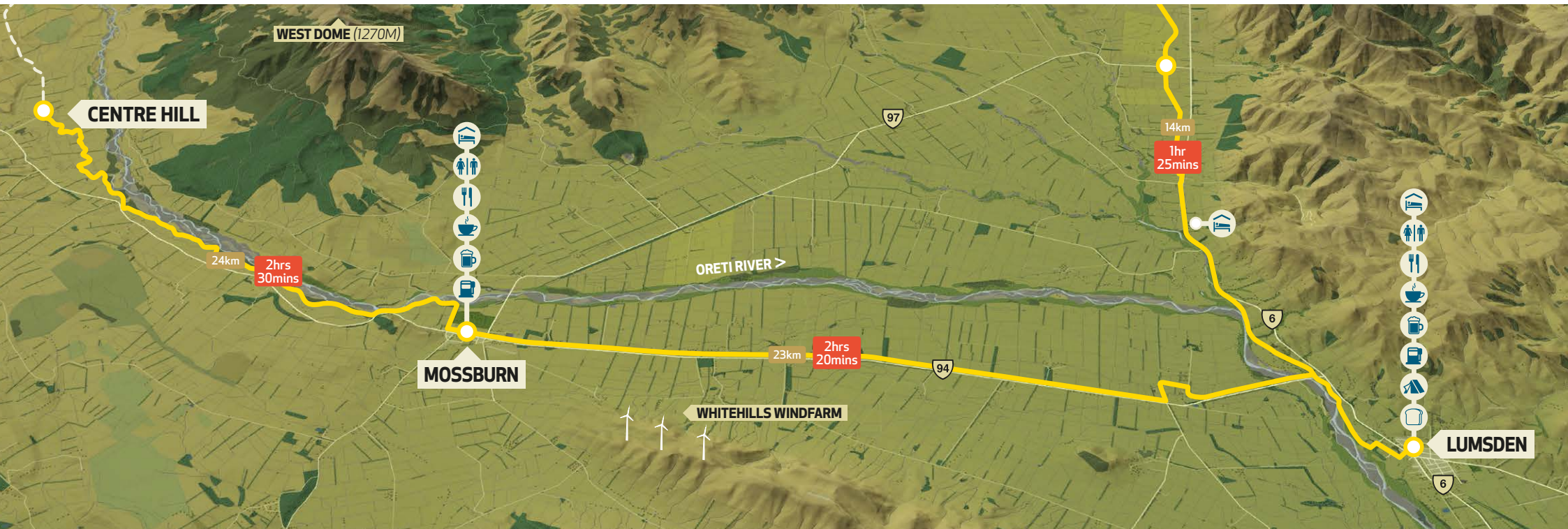
Cyclists have two options from Mavora Lakes to Centre Hill - either get a shuttle bus or ride along the Centre Hill Road.

As a note of precaution this is a gravel road and can have a lot of traffic during the summer months as well as dusty to ride on at times.

If taking the shuttle bus preference, please note you must book in advance and this service only runs between 01 November to 15 April.

Centre Hill to Lumsden via Mossburn

*A relaxing ride through
idyllic pastures and rich
farmland*



Centre Hill to Lumsden - 43km



Centre Hill to Mossburn

From The Eyre Mountains Conservation Park the trail passes the Oreti River and meanders along the side of Starvation Creek, travelling between farms and the Oreti River as it comes back into Mossburn.

Mossburn to Lumsden

The trail leads you from Mossburn, which in the 1970's was named the deer capital of New Zealand back towards Lumsden. This section is 5 km on old railway line and 10 km beside the State Highway and farm paddocks. Then it's over the Oreti Mossburn Bridge and along the flood banks into Lumsden.



Lumsden to Kingston

via Five Rivers, Athol & Garston

*Experience the charm
of Northern Southland's
country towns*



Lumsden to Athol - 35km



Lumsden to Five Rivers

Starting in Lumsden, enjoy the relics of the steam train era around the old local railway station. The trail from Lumsden to Five Rivers is slightly uphill and passes through rich farm lands and by the banks of the Oreti River, another great river to spot the brown trout sunning themselves.

Five Rivers to Athol

Along this section of the trail you predominately ride on the old railway line, encompassing panoramic views of Mid Dome, a prominent Northern Southland mountain, and the surrounding mountains before reaching Five Rivers.

Due to the agricultural nature of this section of the ride, at times you may find some of the gates are locked to protect to safety of the animals in the area.

The track is certainly still rideable, and if this circumstance arises, another aspect of adventure can be added to the already thrilling trail. Lifting your bike is the only way forward, but what better way to give your legs a break!

Athol to Kingston - 30km



Athol to Garston

The cycle trail from here has been constructed on an old disused railway line.

The trail crosses the Mataura River along the way where there are two cycle suspension bridges which are 67m and 92m in length. The locals have named them Athol's Golden Gates. Looking over the bridge you can often see brown trout swimming around in the pristine, crystal clear waters.

Garston has reinvented itself with a mobile café called the Air Stream, a honey shop and is also home to two small, attractive, historic churches.

Garston to Kingston

From Garston the trail crosses the Mataura River on a suspension Bridge, past old stone ruins of the area's original stone homestead, and past formations of the glacier moraine at the foot of the Eyre Mountains.

From here you ride into Kingston, a small town on the southern edge of Lake Wakatipu, Kingston has a café, a camping ground, a number of B&B lodges and is home to the historic steam train the Kingston Flyer.

Take a shuttle bus from Kingston to Queenstown to finish your Around the Mountains adventure.